



GET READY for KINDERGARTEN

WHERE THE SPARK STARTS!





56 Schools

32 Elementary
9 Middle
2 Secondary (Grades 6-12)
10 High
1 Alternative
1 Hospital
1 Virtual Academy

30,345 Diverse Students

37.2% African-American
35.1% Hispanic/Latino
19.5% White
8.2% American Indian, Asian,
Hawaiian-Pacific, Multi-Racial

2,410 Teachers
30% have more than 20 years of
experience

Student Teacher Ratios

K-3: 1 to 18
4-5: 1 to 23
6-8: 1 to 21
9-12: 1 to 24

88.2 percent of schools met or exceeded
growth goals in 2022-23

Every student group improved test scores

14 schools in A or B status

National Board-Certified Teachers



Recent Achievements

Blue Ribbon Lighthouse School of Excellence

National Magnet School of Distinction

Capturing Kids' Hearts National Showcase School

TILT (Trauma Informed Leadership Training) School of Distinction

Green Ribbon School

Project Lead the Way School

PTA School of Excellence

STRATEGIC PLAN 2023-2028

AT A GLANCE

Priority 1

Foster Academic
Excellence

Priority 2

Provide a Safe and Healthy
School Environment that
Supports the Whole Child

Priority 3

Recruit, Support,
and Retain an
Exemplary Staff

Priority 4

Cultivate Meaningful and
Authentic Community
Engagement

Priority 5

Conduct Business,
Administrative, and
Operational Functions
Responsibly and Equitably



2024-25 ELEMENTARY STUDENT ASSIGNMENT PLAN

Beginning July 2024 #WeAreDPS #GrowingTogether



- Establishes Five (5) Elementary Regions
 - > Northern
 - > Central
 - > Eastern
 - > Southeast
 - > Southwest



BENEFITS OF THE NEW PLAN

MORE OPTIONS



Find a year-round, Montessori, IB, or dual-language immersion program that's just down the road.

BETTER ACCESS



Pick a school that's the right fit for your child's educational needs and the needs of the family.

EQUITABLE EDUCATION



Access schools that are equitable, close to home, and supported by short school bus routes.

APPLICATION SCHOOL OPTIONS



Learn More about Your School Options

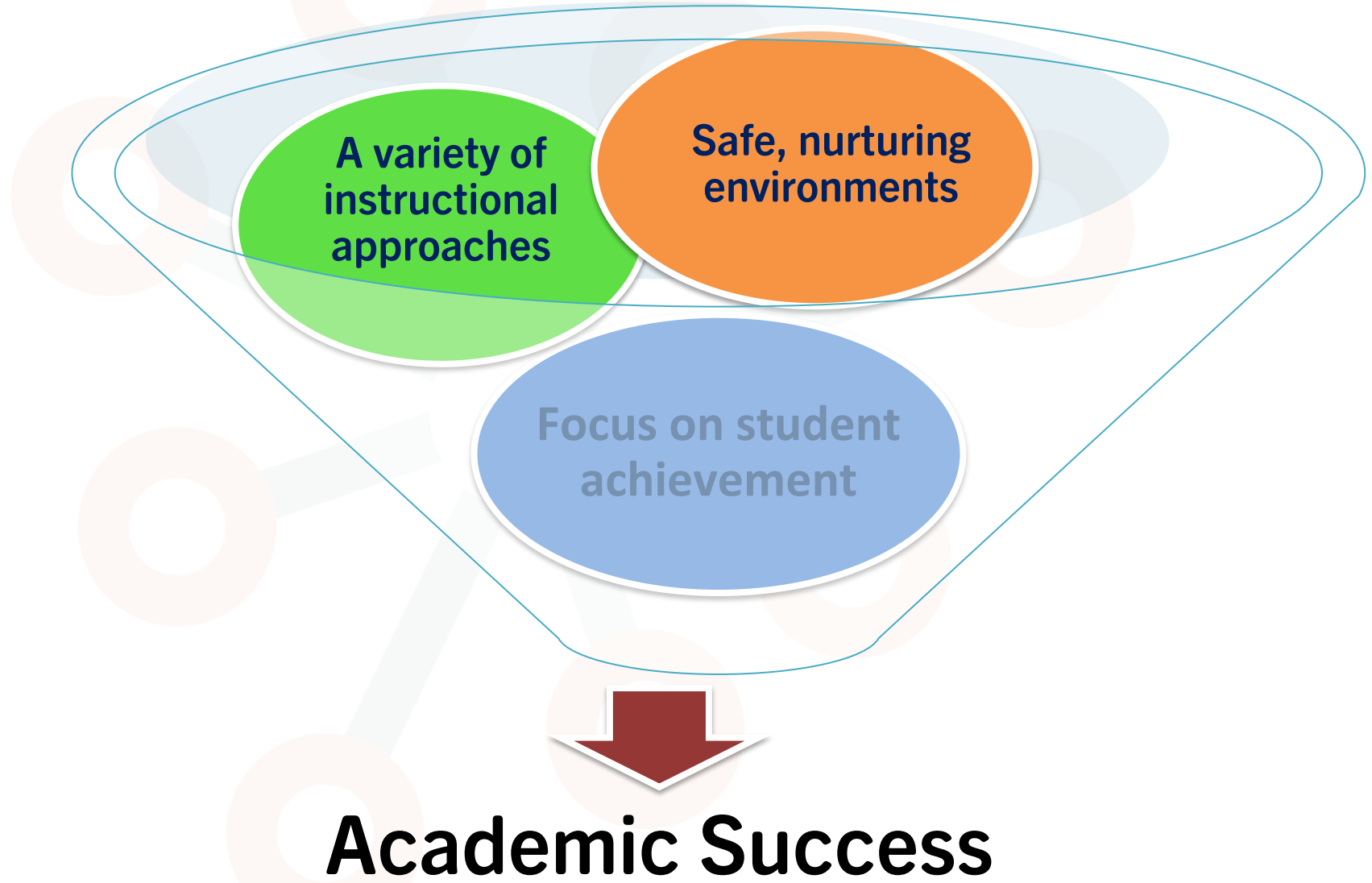
A screenshot of a website titled "SEARCH BY REGION" for the District of Columbia Public Schools. At the top left is a map of the District of Columbia divided into five colored regions: Northern (green), Eastern (orange), Central (blue), Southeast (yellow), and Southwest (purple). The title "SEARCH BY REGION" is in large, bold, orange letters. Below the title are five buttons labeled "REGION NORTHERN", "EASTERN", "CENTRAL", "SOUTHEAST", and "SOUTHWEST". Underneath these are five "SCHOOL TYPE" filters: "M Masterplan" (with a small 'M' icon), "IB International Baccalaureate" (with a small 'IB' icon), "DL Dual Language" (with a small 'DL' icon), "Yr Your Round" (with a small 'Yr' icon), and "On Online" (with a small 'On' icon). The "NORTHERN" region is selected and highlighted in green. Below this, four school cards are displayed, each with a photo of the school building and its name, address, and "Choice Program: Zoned" status.

School Name	Address	Choice Program
Eno Valley Elementary	117 Milton Road	Choice Program: Zoned
Sandy Ridge Elementary	1417 Old Oxford Road	Choice Program: Zoned
Hillandale Elementary	2720 Hillandale Road	Choice Program: Zoned
Mangum Elementary	9008 Quail Roost Road	Choice Program: Zoned



Find your zoned school, learn about choice options, and get tour dates at www.welcome.dpsnc.net

Durham Public Schools Offers:



Academic Success



North Carolina Department of **PUBLIC INSTRUCTION**

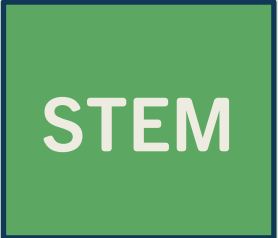




The NCDPI Standard Course of Study for Kindergarten includes:

- | | |
|-------------------------|-------------------------|
| ✓ English Language Arts | ✓ Arts Education |
| ✓ Mathematics | ✓ Computer Science |
| ✓ Science | ✓ Digital Learning |
| ✓ Social Studies | ✓ Healthful Living & PE |

Durham Public Schools also offers:



 <p>STEM</p>	<ul style="list-style-type: none">● STEM is integrated daily in all elementary schools through the design thinking process, which applies to every subject area, including reading, social studies, and art.● Design thinking is when students ASK, EXPLORE, IDEATE, TRY and REFINE, and SHARE during learning and problem solving.
 <p>Global Languages</p>	<ul style="list-style-type: none">● Every elementary school offers weekly Spanish instruction with a dedicated Spanish teacher.● Students enrolled in a dual-language immersion program will also have access to French and Mandarin instruction.
 <p>Arts</p>	<ul style="list-style-type: none">● Every elementary school has a visual arts and music special with a dedicated visual arts teacher and a dedicated music teacher in a dedicated classroom space.

DPS Kindergarten Curriculum



The Five Domains of School Readiness:

- Language and Literacy
- Cognition and General Knowledge
- Approaches toward Learning
- Physical Well-Being and Motor Development
- Social and Emotional Development

Literacy

- A structured approach including thinking, listening, reading, writing, and word study
- Independent, modeled, guided, and shared instructional approaches
- Informal and formal assessments

Math

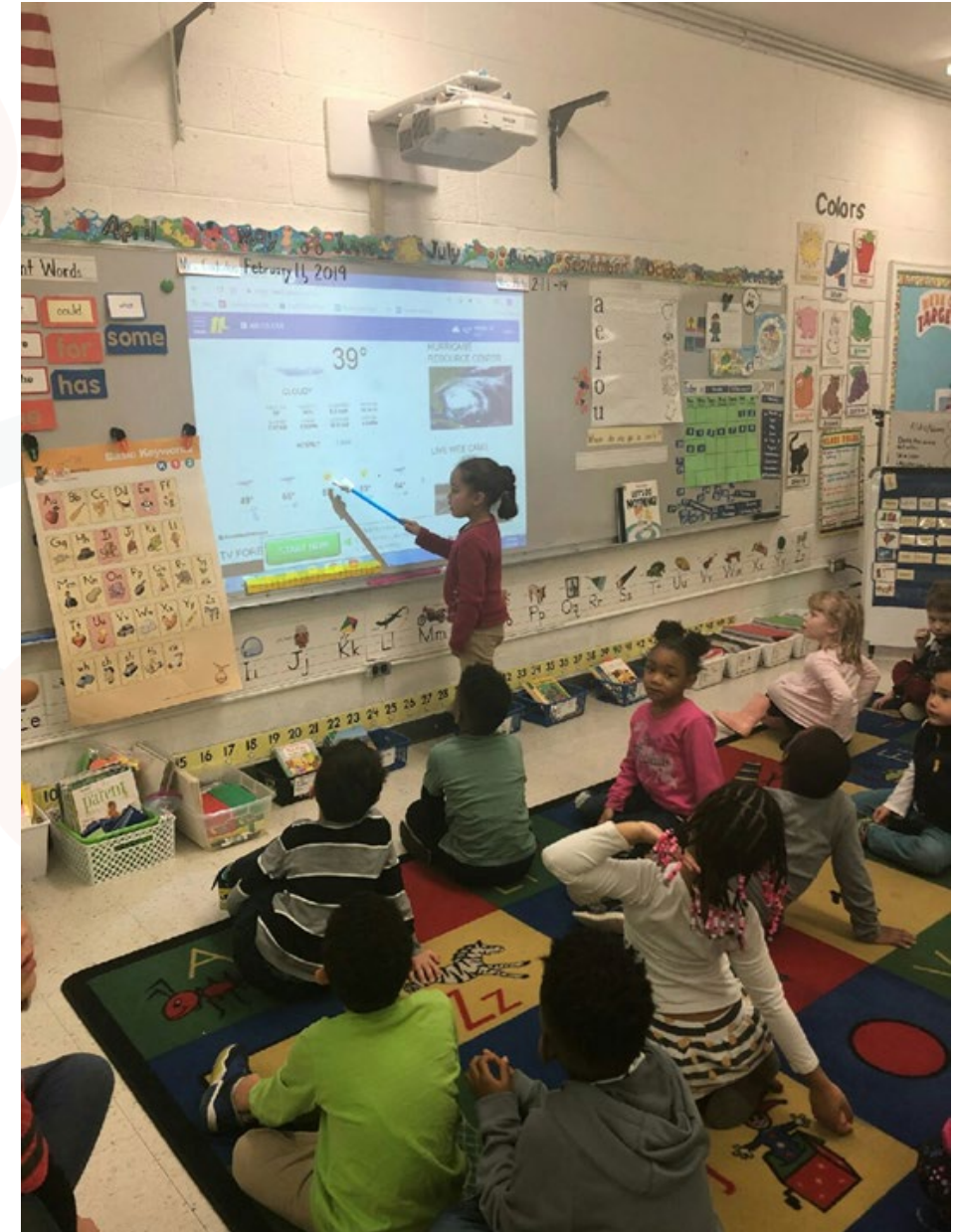
- Development of number sense and reasoning using a conceptual approach
- Understanding of operations and problem solving
- Hands-on learning encouraged through student exploration
- Informal and formal assessments



Components of a Typical Day in Kindergarten



- **Morning Meeting**
 - Social and emotional learning
- **Literacy Block**
 - Whole group and small group instruction
 - Literacy Stations
- **Math Block**
 - Whole group and small group instruction
- **Science**
 - Whole group instruction
 - Hands-on learning experiences
 - Literacy practices integrated
- **Social Studies**
 - Whole group instruction
 - Literacy practices integrated
- **Specials**
 - Health and Physical Education
 - Arts
 - Music
 - Global Languages



Differentiation

Nurturing

- Provides a loving and caring environment

Academically and/or Intellectually Gifted (AIG)

- Serves all kindergartners through a series of whole and small class sessions
- Collaborates with classroom teachers to provide advanced learning opportunities
- Confers with parents to determine advanced learning needs

Exceptional Children (EC)

- Delivers individualized specialized instruction

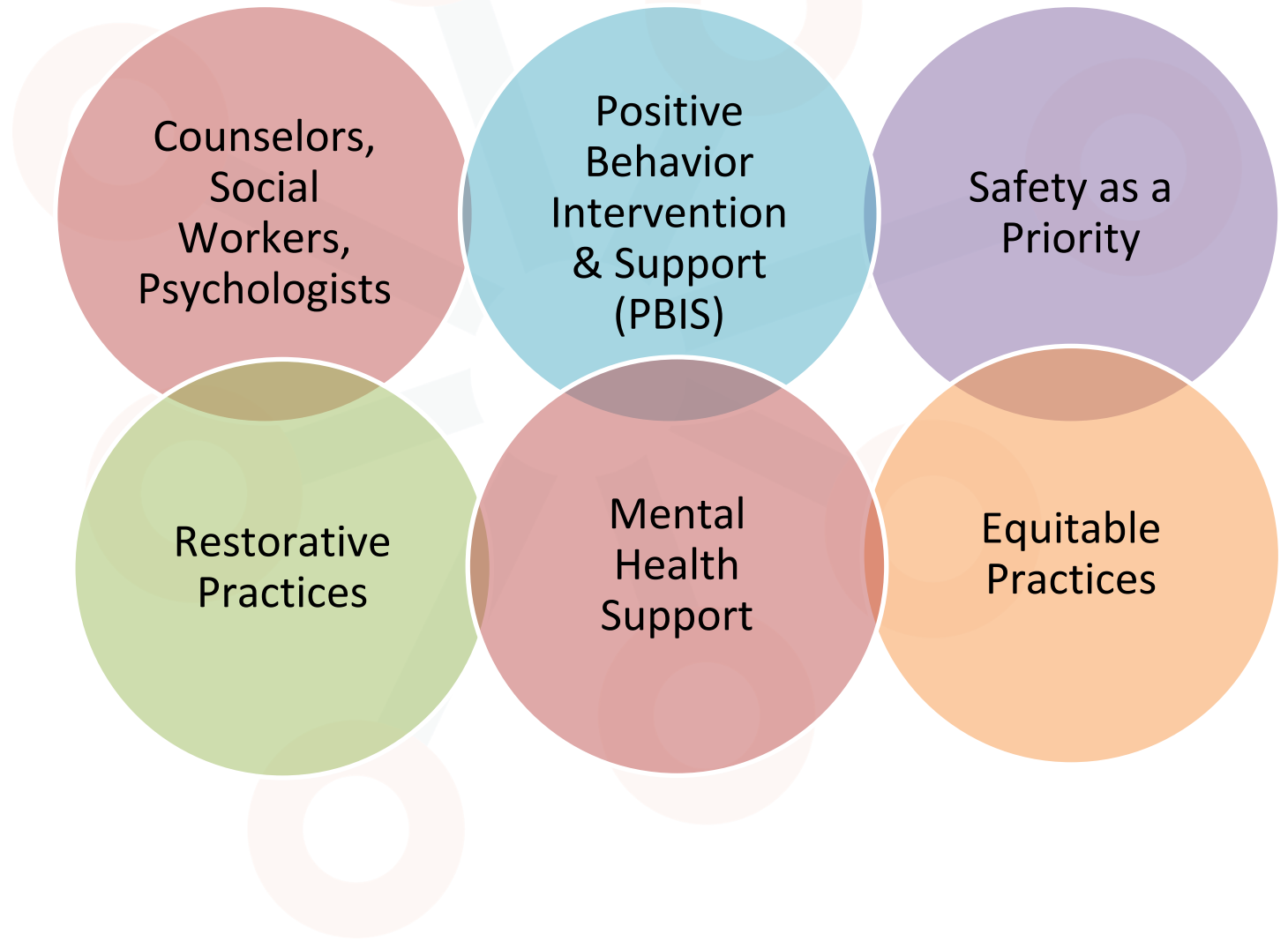


Parent Connections

- Read to your child every day
- Communicate with your child's teacher
- Volunteer at your child's school
- Attend school meetings and events
- Join school improvement committees
- Attend Family Academy
- Attend the PTA
- Share your talents and skills
- Make learning fun!



Social Emotional Support



Counselors,
Social
Workers,
Psychologists

Positive
Behavior
Intervention
& Support
(PBIS)

Safety as a
Priority

Restorative
Practices

Mental
Health
Support

Equitable
Practices

Get Ready for Registration

Step 1: Complete the New Student Enrollment Portal (English, Spanish):

- Available in March at <https://www.dpsnc.net/Page/340>

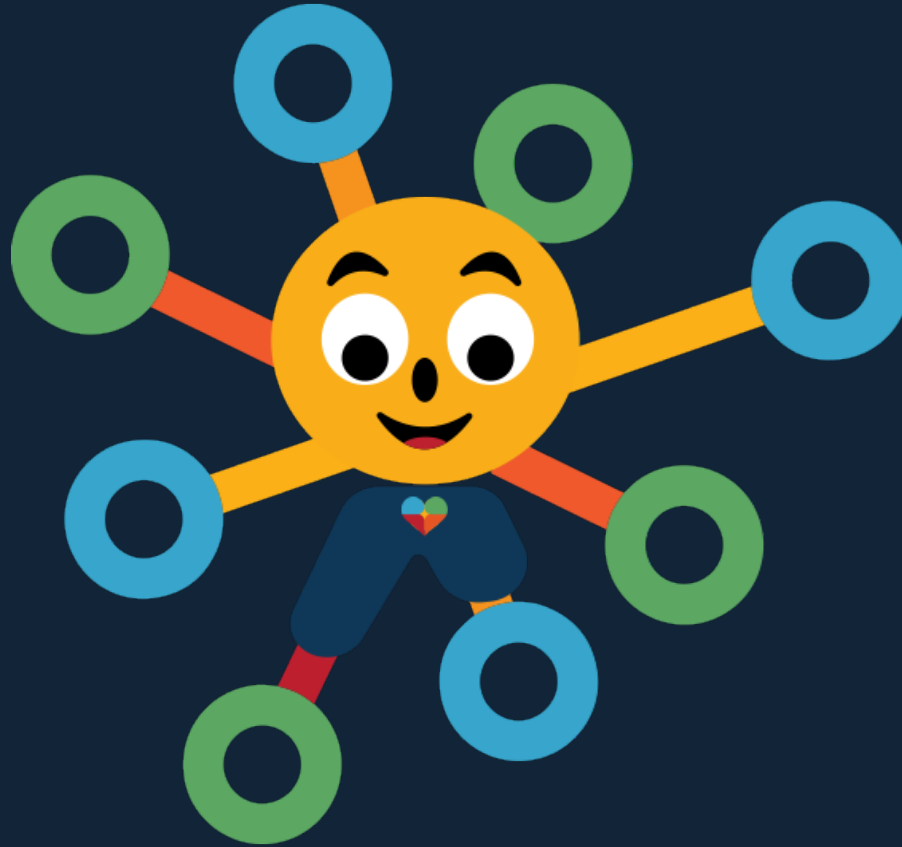
Step 2: You will need the following documents to complete enrollment:

- Your child's certified birth certificate
- Proof of domicile (POD)
- Immunization record
- Health Assessment Form

Contact the Office of Student Assignment at 919-560-2059 or Early Education at 919-560-3505 for more information or assistance.



SAY YES TO KINDERGARTEN IN DPS



IGNITING LIMITLESS POTENTIAL